

THE PASCAL LUTHY COLLECTION FOR MAISON DUPIN

MIGUEL KIRJON



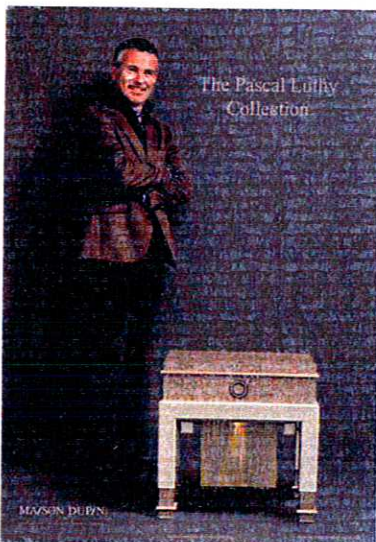
An innovative technique that allows light to shine through wood, giving it a stunning stained-glass window visual effect, has led designer Pascal Luthy to Maison Dupin, where he has created an exclusive collection for this centuries-old furniture design house.

pieces in the world with 56 assembling material choices by model proposed to the customer, will be certified and signed by the artist in charge of this "Master Pieces" execution. Maison Dupin produces, on demand, all the orders in its workshops in Geneva.

Pascal Luthy offers the possibility to add a personal touch to the collection by executing special pieces on request. Since Maison Dupin was created in 1820, its artisans

within its seven talented departments have developed mastery in assembling materials and technologies, respecting the rules of art, quality and tradition. Pascal Luthy says of Maison Dupin, "Our profession consists of applying the immutable laws of harmony to your living spaces, to make them into a source of daily joy. To amaze you, we travel the world seeking objects, materials and exceptional skills."

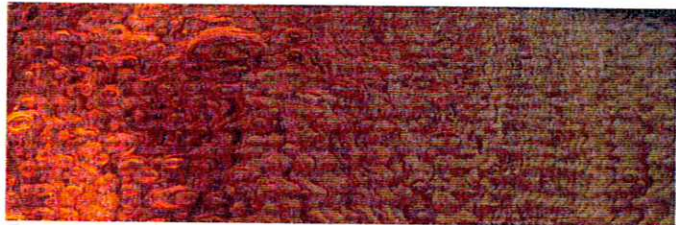
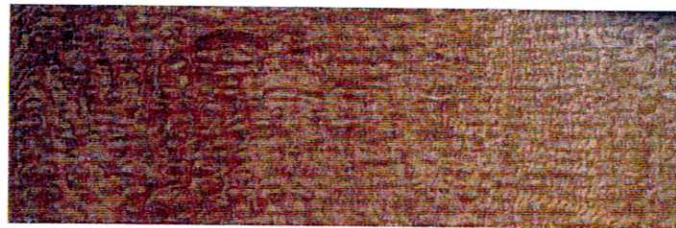
For more information visit pascal-luthy.com.



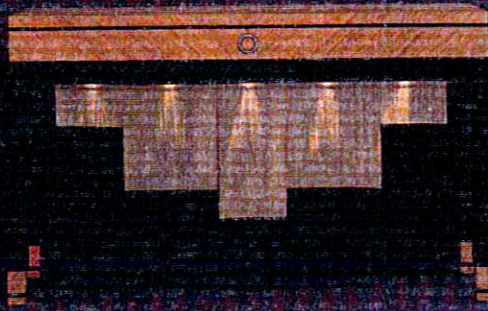
Pascal Luthy's start as a cabinet worker ignited a passion for uncommon woods and beautiful materials, which now form the basis of his artistry in creating translucent wood furniture. Earning a Fine Arts degree in design and an Interior Architectural BFA in the United States, Pascal's works are exhibited in private collections and the Cooper Hewitt Museum in New York. He has also designed select installations in Switzerland and abroad for renowned companies and individuals.

He creates his collection in exclusivity for Maison Dupin, using a selection of highly eye-catching pieces. "The Collection" is a mix of a new classical, inspired by the Orient and Occident, putting together the grace of rare woods, the refinement of proportions, and the exquisitely smooth touch of pure lines. Every piece has a day life and a night life. Once the lights are turned on, the atmosphere comes to life, playing with metal fabrics, gloss, Swarovski crystals or rock crystals, creating a vivid, dynamic character. Every model, which is limited to 18 unique

The wood surface lit from the inside in three different light modes: off, 50% on, 100% on

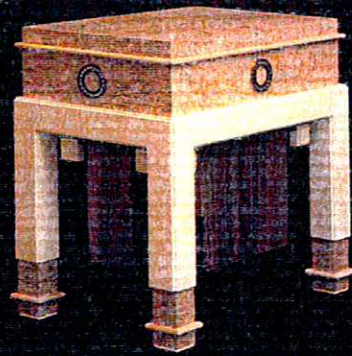


The Pascal Luthy
Collection



MAISON DUPIN

The Pascal Luthy
Collection



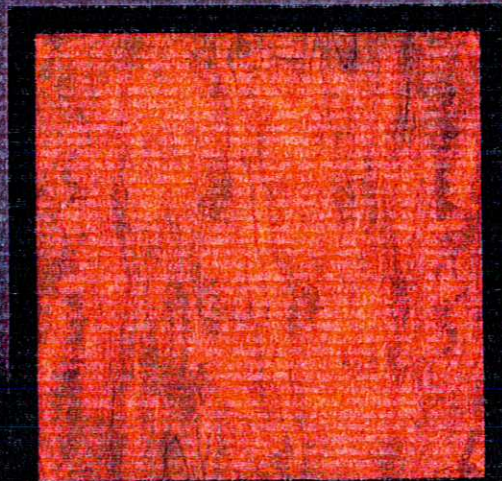
MAISON DUPIN

The Pascal Luthy
Collection



MAISON DUPIN

The Pascal Luthy
Collection



MAISON DUPIN